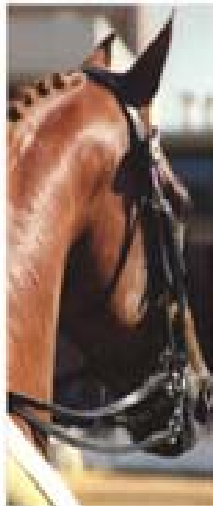




EQUESTRIAN FEDERATION OF AUSTRALIA



GEAR CHECKERS MANUAL



DRESSAGE

GEAR CHECKING

Gear Checkers should be in possession of the Gear Steward's Check List (Separate) and should be trained in how to recognise acceptable and non-acceptable clothing, gear, etc.

It is the responsibility of the organising committee to provide a gear steward. It is the ultimate responsibility of the rider to comply with rules relating to gear.

Every consideration must be given to not disturbing the harmony of the horse and the rider prior to them entering the competition arena.

The gear steward should **NOT** alter any gear. If gear is too loose or incorrectly fitted, the rider or their groom should make the necessary adjustments.

DRESS, SADDLERY & EQUIPMENT

This section defines the legality and standard of the dress, saddlery and equipment expectations for all Dressage competitions run on behalf of the EFA. Only dress, saddlery and equipment permitted, as outlined below, will be allowed in designated areas. It is the competitor's responsibility to abide by these rules. Failure to comply may entail elimination.

A steward appointed by the event organisers shall check the dress, saddlery and equipment of each horse and rider as per the rules of that competition.

If a rider does not have their gear checked by the appointed steward, they may incur elimination at the discretion of the Ground Jury, or Chief Steward if appointed.

All riders should be neatly and correctly dressed at all times when mounted.

1. Compulsory Dress by Level

1.1 Preliminary to Elementary Levels

- White, off-white, light canary or beige jodhpurs or breeches
- Short coat
- Riding boots, either long or short black or brown
- Riders under 18 years – approved safety helmet
- Riders 18 years and over, hunt cap, bowler hat or approved safety helmet
- Gloves, tie, stock or ratcatcher

Optional, as defined below :

- Spurs, whip, gaiters and/or monkey grip
- Military personnel, police, etc. may wear service dress

1.2 Medium Level

- White, off-white, light canary or beige jodhpurs or breeches
- Short Coat



EFA WA GEAR CHECKERS MANUAL

- Riding boots, either long or short black or brown
- Riders under 18 years – approved safety helmet
- Riders 18 years and over, hunt cap, bowler hat or approved safety helmet
- Gloves, tie, stock or ratcatcher
- Spurs are compulsory when a double bridle is worn

Optional, as defined below :

- Whip, gaiters and/or monkey grip
- Top hat providing a double bridle is worn
- Military personnel, police, etc. may wear service dress

1.3 **Advanced Level**

- White or off-white breeches
- Black or dark blue tail coat, or short coat
- Long black riding boots (unless under 18yrs)
- Riders under 18 years – approved safety helmet
- Riders 18 years and over, hunt cap, bowler hat or approved safety helmet
- Gloves, tie or stock
- Spurs

Optional, as defined below

- Whip and/or monkey grip
- Military personnel, policy etc. may wear service dress

1.4 **Prix St Georges to Grand Prix Levels**

- White or off-white breeches
- Black or dark blue tail coat, or short coat may be worn if wearing an approved safety helmet
- Long black riding boots
- Top hat, or approved safety headgear
- Gloves, tie or stock
- Spurs

Optional

- If an approved safety helmet is worn the wearing of a short coat is permissible
- Military personnel, policy etc. may wear service dress

Only permitted as per section (in the 2008 Dressage Rulebook) 2.6 and 2.11

- Whip

2. **Headgear**

Competing riders must wear head gear applicable to their level of competition. Grooms, when mounted on a horse, must wear approved safety head gear with the retaining harness secured and fastened.

Approved safety headgear is to be worn at all times when training or practising at an event.

Current approved safety headgear are :

- **AS/NZS 3838** (Current Australian Standard)
- **EN 1384** (Current European Standard)
- **ASTN F1163** (Current US Standard)

3. **Footwear**



EFA WA GEAR CHECKERS MANUAL

Whilst mounted, all riders must wear leather riding boots with smooth or almost smooth soles and heels. The following table will clarify what can be worn at what level

| Boots (with smooth soles) | Preliminary to Medium | Advanced | FEI |
|---|------------------------------|-----------------|------------|
| Short Boots (black or brown only) – under 18 | Yes | Yes | NO |
| Short Boots (black or brown only) –18 and over | Yes | No | No |
| Short Boots with matching coloured gaiters | Yes | No | No |
| Short boots with matching coloured gaiters with black or brown hunting tops | Yes | No | No |
| Long brown boots | Yes | No | No |
| Long boots with hunting tops | Yes | Yes | No |
| Long black boots (Top Boots) | Yes | Yes | Yes |

4. Gaiters/Chapettes

- Gaiters may only be worn with short leather boots with heels
- The exposed side of the gaiter must be full grain leather
- The gaiters must match the colour of the boots
- Gaiters may have hunting tops which must be brown or black

5. Spurs

- Spurs may be worn by competitors at all levels
- Spurs are compulsory when a double bridle is worn
- Spurs must be made of metal
- There must be a shank either curved or straight pointing directly back from the centre of the spur when on the rider's boot. The tip of the shank must not point up or inwards.
- The arms of the spur must be smooth, and rowels must be free to rotate.
- There is no maximum length of spurs. However, in Eventing there is.
- Metal spurs with hard plastic knobs and dummy spurs with no shank are allowed.

6. Whips

- A whip, not exceeding 1.2 metres in its entirety (including the tassel), may be carried and used by a competitor in tests up to and including Advanced level at all events including all Championships.
- A whip may be carried and used by a competitor in FEI level tests at all events in Australia **except** State and National Championships, FEI sanctioned competitions (CDIs), International events or special qualifying competitions for World Championships and Olympic Games.

7. Coats

The wearing of coats is optional in hot weather conditions, at the discretion of the Organising Committee. If a rider chooses to discard their coat, then a light coloured shirt must be worn with a



EFA WA GEAR CHECKERS MANUAL

rat catcher or normal collar and long or short sleeves. A t-shirt or sleeveless shirt must not be worn.

8. **Pocket Badges**

Pocket badges are only issued to riders for specific occasions. On most occasions only one pocket badge should be worn at competitions (unless riding as a representative). Once a rider has represented Australia at a World Championships or Olympic Games, they may wear the Australian flag at all times.

9. **Saddle and Saddlecloth**

- A fully mounted Dressage type saddle (or all-purpose) of traditional or treeless construction is compulsory, with or without saddlecloth.
- A crupper may be worn by ponies
- Saddlecloths may be straight or shaped, and white is preferred.

10. **Bridles, Nosebands and Bits**

Padding is allowed

10.1 **Snaffle Bridle**

- A snaffle bridle (single snaffle bit and one set of reins) is compulsory in all tests up to and including Elementary level. A snaffle bridle is optional at Medium level.
- Nosebands must only have one type of dropped, cavesson, flash or crossed noseband.
- Nosebands must not be so tightly fixed as to harm the horse. Gear Checkers must not loosen the noseband but ask the rider to do so.
- Wrapping of bits is not permitted
- Only snaffle bits having the following features are approved for use in Dressage. Snaffle bits shall be composed of :
 - Metal or
 - Metal and rubber (flexible rubber bits are not permitted) or
 - Metal and synthetic material
 - Rigid plastic

Snaffle bits and bridoons made only of metal must meet the following :

- All parts of the bit coming into the horse's mouth must be of metal (not necessarily the same metal)
- The diameter of the mouthpiece of the bit is 10mm and 14mm for Young Horses.
- There must not be more than two joints in the mouth piece.
- All parts coming into the horses mouth shall be rounded, smooth and no ridged, sharp or corrugated.
- Double jointed bits are permitted one rolling middle piece
- Keeping within the definition above, some of the types of bits also permitted are:
 - Half moon – port-mouth – curved
 - Rubber or synthetic bit – both jointed and unjointed
 - Sweet iron bit

10.2 **Double Bridle**

- A double bridle (snaffle bit and curb bit with two sets of reins) is permitted in Medium tests and compulsory in Advanced tests and above.
- Rules for Bridoon (snaffle) bits are as per above
- The curb bit must be made of metal or rigid plastic and may be covered in rubber. The minimum diameter is 14mm, and the lever arm should not measure more than 10cm.
- Only cavesson nosebands are allowed.



EFA WA GEAR CHECKERS MANUAL

- Optional items include a lip strap, and leather or rubber curb chain cover.
-

11 Allowed at an Event/Venue

- Breastplates are permitted up to and including medium level, where a snaffle bridle only is used.
- Foregirths are permitted at all levels.
- False tails are permitted in all competition; however, if the false tail is found to contain metal, the penalty is **elimination**.
- Neck straps may only be used for safety purposes
- All competitors are permitted the use of one whip in all areas.
- Monkey grips are permitted in all areas, at all levels.

12 Not allowed at an Event/Venue

- Blinkers, hoods, ear plugs and nasal strips.
- Bit Guards (Leather/rubber circular gadgets that stop the bit pulling through)
- Bearing, running or balancing reins either lungeing or riding.
- Any decoration of the horse aside from plaiting

13 Allowed in the Warm Up Area, but NOT Competition Arena

The following gear is permitted in the Warm up area but not allowed past the gear steward into the competition area. Non compliance will incur elimination.

- Running Martingales (with a snaffle bridle)
- Boots and bandages
- Rubber over boots (e.g. Easy Boot/Mac Boot)
- Saddle covers (e.g. sheepskin or rain covers, etc)
- Headphones

A double bridle can be used in the Warm up and Exercise Area, by any level competitor

14 Lungeing

Wherever possible, a designated area should be set aside for lungeing.

- Only one lunge rein may be used
- Two single direct side reins may be used

15 Exemption Cards – Riders with a Disability

In order that any riders with a disability may compete on equal terms, a scheme has been established by the EFA and RDAA. The exemption cards are not limited to RDAA riders. The card does not mention the rider's disability. However, it does mention the rule number for which the rider is exempt.

The exemption cards are issued for :

- A maximum period of four years
- Competition in Australia only
- In the case of short term injury and maximum time recommended by the appointed exemption committee.



EVENTING

Eventing is a three phase sport (Dressage, Cross Country and Showjumping) and different rules apply to each phase.

It is the competitors responsibility to:

- Ensure they are displaying their number in the appropriate fashion stipulated.
- Have an approved helmet (as for dressage)

1. DRESSAGE DRESS & SADDLERY

Whip

- Carrying a whip of any kind during the dressage test is forbidden
- A dressage whip may be used while warming up for dressage.

Spurs & Gloves

- The wearing of spurs and gloves during the dressage test is compulsory in CNC*** and CNC** classes.
- Rules regarding spurs are the same as for Dressage Rules.

Protective Headgear

- An approved helmet is compulsory for anyone riding a horse, except for top hats
- Rules regarding helmets to be worn at each level are the same as in the Dressage

Dress

- As for in the dressage rules above.

Saddle

The following are compulsory:

- A dressage or All-Purpose saddle

Snaffle & Nosebands

- A snaffle bridle of which the bit is made of metal, leather, rubber or plastic material is permitted at all levels. It must have either a cavesson noseband OR dropped noseband OR crossed noseband OR flash noseband.

Double Bridle (permitted at CNC** and above):

- As per the Dressage Rules

Other

- If metal bits are used, all parts of the bit coming into the horse's mouth must be of metal.
- A breastplate may be used.
- False tails are permitted provided they are not weighted or otherwise "enhanced" in any way whatsoever.

Prohibited under penalty of elimination:

- martingales, any kind of gadget (such as bearing, side, running/balancing reins etc), earmuffs or earplugs, any kind of boots or bandages, bit guards, fly shields (although these may be permitted under exceptional circumstances), nose covers, seat covers, any form of blinkers including earmuffs and hoods.



2. CROS COUNTRY DRESS & SADDLERY

Dress

- An approved helmet is compulsory for anyone jumping an obstacle.
- Service dress or hunting dress with approved helmet is acceptable at all levels.
- Boots and chappettes are as per Dressage Rules.
- Spurs are optional, but if used see dressage rules. No rowels are allowed.
- The wearing of medical armbands is compulsory. Armband are to be worn on upper arm.
- NOTE: No rider is allowed to compete wearing a green and gold hooped shirt or green and gold quartered cap cover unless representing Australia as a member of an official Australian squad or team.

Saddlery

- If a whip is carried in the cross-country and/or jumping test it must not be weighted at the end or exceed 75 cm in length.
- The type of saddlery is optional with the exception of any form of blinkers, which are forbidden.
- Only unrestricted running martingales or Irish martingales are allowed. Reins must be attached to the bit(s) or directly to the bridle.
- Gags or hackamores are allowed.
- The stirrup iron and stirrup leathers must hang free from the bar of the saddle and outside of the flap.
- Blinkers, side, running or balancing reins, tongue straps and/or tongue-ties are forbidden.

3. JUMPING DRESS & SADDLERY

Whips & Spurs

As per the rules above.

Dress

- Service dress or hunting dress. A safety vest may be used with or instead of a jacket. If it is worn without a jacket, a long sleeve white shirt and tie or stock must be worn.
- Boots and Helmets are as per the above rules

Saddlery

- The type of saddlery is optional with the exception of any form of blinkers, which are forbidden.
- Only unrestricted running martingales or Irish martingales are allowed.
- Reins must be attached to the bit(s) or directly to the bridle.
- Gags or hackamores are allowed.
- In the interest of safety, the stirrup iron and stirrup leathers must hang free from the bar of the saddle and outside of the flap.
- There must be no other restrictions or attachments of any kind.